

TOYOTA RAV4 2010 - Body Side Molding

Part Number: 00016-42701 -01,02,03,08,09,10,12,14,20,21 & 28

Accessory Code: MW3



Conflicts

Note:

Kit Contents

Item #	Quantity Req'd.	Description
1	1	Driver side 2 piece molding
2	1	Passenger side 2 piece molding
3	1	DIO instruction sheet
4		
5		
6		
7		
8		

Hardware Bag Contents

Item #	Quantity Req'd.	Description
1		
2		
3		
4		
5		
6		
7		
8		

Additional Items Required For Installation

Item #	Quantity Req'd.	Description

Recommended Tools

Safety Tools	
Special Tools	
PIO installation templates	
Molding Roller or Cloth	(Optional)
IR Probe	
Installation Tools	
China marker	
Measuring tape	
Special Chemicals	
Alcohol/water 50-50 mix	

Color Applicability/Trim Level

Vehicle/Trim Color	00016-42701-10	00016-42701-20	00016-42701-21	00016-42701-01	00016-42701-14	00016-42701-02	00016-42701-03	00016-42701-12	00016-42701-08	00016-42701-09	00016-42701-28
040 Super White	X										
070 Blizzard Pearl		X									
1G3 Magetic Gray Metallic			X								
1F7 Classic Silver				X							
4T3 Pyrite Mica					X						
202 Black						X					
3R3 Barcelona Red							X				
6T3 Black Forest Pearl								X			
8R3 Pacific Blue Metallic									X		
4T8 Sandy Beach Metallic										X	
9AP Elusive Blue Metallic											X

General Applicability

Recommended Sequence of Application

Item #	Accessory
1	
2	


*Mandatory


Legend


- STOP:** Damage to the vehicle may occur. Do not proceed until process has been complied with.
- OPERATOR SAFETY:** Use caution to avoid risk of injury.
- CAUTION:** A process that must be carefully observed in order to reduce the risk of damage to the accessory/vehicle and to ensure a quality installation.
- TOOLS & EQUIPMENT:** Used in Figures calls out the specific tools and equipment recommended for this process.
- REVISION MARK:** This mark highlights a change in installation with respect to previous issue.
- SAFETY TORQUE:** This mark indicates that torque is related to safety.


SPECIAL NOTE: Installation Sequences

After TMS and Safety mandated preparatory steps have been taken, the installation sequence is the suggested method for completing the accessory installation. In some instances the suggested sequence is written for one associate to install and in others the sequence is given as part of a team accessory installation. Unless otherwise stated in the document, the associates may perform the installation steps in any order to make the installation as efficient as possible while maintaining consistent quality.

 **Note:** To ensure maximum adhesive bond, vehicle surface and molding temperature should be at least 60 degrees F.


 1. Prepare surface of installation area by cleaning with alcohol/water mixture.

 2. Measure back 6 inches from front door leading edge and place bottom edge of 7 1/2 in. template on door lower feature line as shown in Fig. 1.

 3. Measure back 17 inches from rear door leading edge and place bottom edge of 7 1/2 in. template on door lower feature line as in Fig. 2.

4. Templates should line up with feature line as in Fig. 3.

5. Make a horizontal mark on top of both templates with a China marker as in Fig. 4.

 6. Remove small magnetic templates and place large straight edge template so top edge of template lines up with China marks. Be sure to line up door edge marks on template with door edges. See Fig's. 5 and 6.

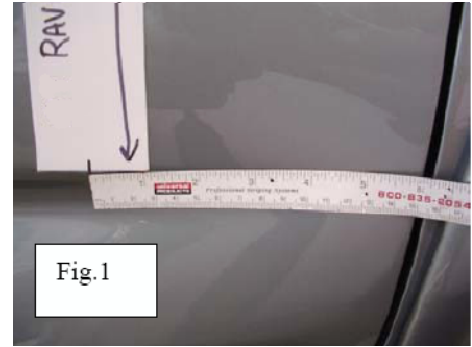


Fig.1



Fig.2

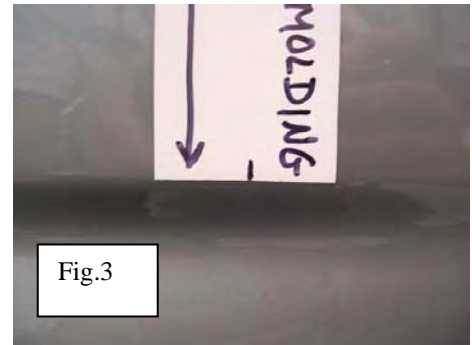


Fig.3

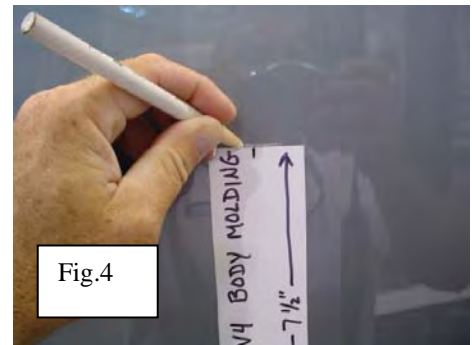


Fig.4



Fig.5

7. Peel about 2 inches of tape backing off of rear door molding from squared end and remove small piece of backing from pointed end. Fig. 7.

8. Line up squared end of molding with rear door starting mark on large template. See Fig. 8. Apply molding along top edge of large template peeling back tape in short sections at a time. Repeat steps 7 and 8 for front door molding piece.

9. Remove large straight edge template and apply firm pressure with roller or cloth along entire length of molding pieces paying close attention to pointed ends. Make sure tape is completely adhered to vehicle.

10. Clean China marks with alcohol/water mix. Fig. 9.



11. Open rear door and insure molding clears front door edge without rubbing.

12. Repeat entire process on other side of vehicle.

