

**TOYOTA COROLLA**

2010 -

**FOG LIGHT**

**Part Number: 00016-32105**

**Accessory Code: LF10**



**Kit Contents**

Item #	Quantity Req'd.	Description
1	2	Fog Lamps
2	2	Fog Lamp's bezels
3	1	Switch Assembly

**Hardware Bag Contents**

Item #	Quantity Req'd.	Description
1	1	Wire harness
2	1	Switch harness
3	1	SPST Relay: "fog light relay"
4	1	SPDT Relay: "switch relay"
5	1	Relay socket
6	15	Wire ties (6 pcs 4", 9 pcs 8")
7	4	Phillip head screws
8	2	T-Taps
9	2	Ring terminals
10	1	3 ft. Split loom tubing
11	1	5 ft. Red primary wire
12	2	Spade connectors
13	1	Fuse and fuse holder
14	3	Butt connectors

**Additional Items Required For Installation**

Item #	Quantity Req'd.	Description

**Conflicts**

Note:

**Recommended Tools**

<b>Safety Tools</b>	
Safety Glasses	
Electrical Tape	
<b>Installation Tools</b>	
10mm Wrench	Crimping Tool
Phillips Screw Driver	Torque wrench 36"lbs.
Pliers	
Side Cutters	
<b>Special Chemicals</b>	
3M Silicon Sealant	

**Color Applicability/Trim Level**

Accessory Color																			
	Vehicle /Trim Color																		

**General Applicability**

--

**Recommended Sequence of Application**

Item #	Accessory
1	
2	
3	

Mandatory

**Legend**

-  **STOP:** Damage to the vehicle may occur. Do not proceed until process has been complied with.
-  **OPERATOR SAFETY:** Use caution to avoid risk of injury.
-  **CAUTION:** A process that must be carefully observed in order to reduce the risk of damage to the accessory/vehicle and to ensure a quality installation.
-  **TOOLS & EQUIPMENT:** Used in Figures calls out the specific tools and equipment recommended for this process.
-  **REVISION MARK:** This mark highlights a change in installation with respect to previous issue.
-  **SAFETY TORQUE:** This mark indicates that torque is related to safety.

**SPECIAL NOTE: Installation Sequences**

After TMS and Safety mandated preparatory steps have been taken, the installation sequence is the suggested method for completing the accessory installation. In some instances the suggested sequence is written for one associate to install and in others the sequence is given as part of a team accessory installation. Unless otherwise stated in the document, the associates may perform the installation steps in any order to make the installation as efficient as possible while maintaining consistent quality.

Care must be taken when installing this accessory to ensure damage does not occur to the vehicle. The installation of this accessory should follow approved guidelines to ensure quality installation. These guidelines can be found in the Accessory Installation Practices document.

This document covers such items as:

- Vehicle Protection (use of covers and blankets, cleaning chemicals, etc)
- Safety (eye protection)
- Vehicle Disassembly / Reassembly (panel removal, part storage, etc)

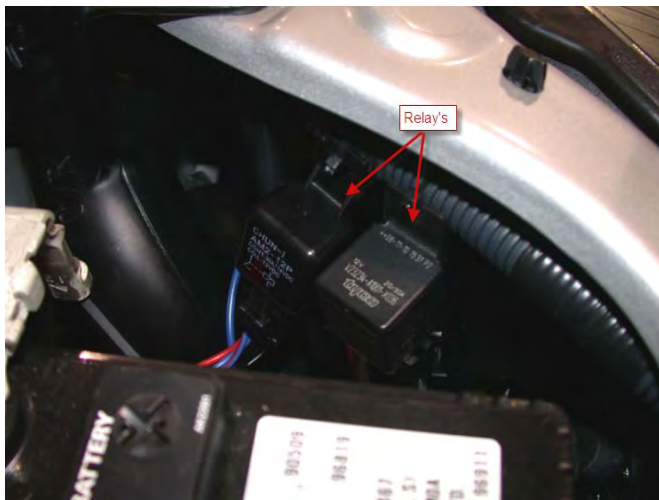
## Preparation



Remove the negative battery terminal using a 10mm wrench

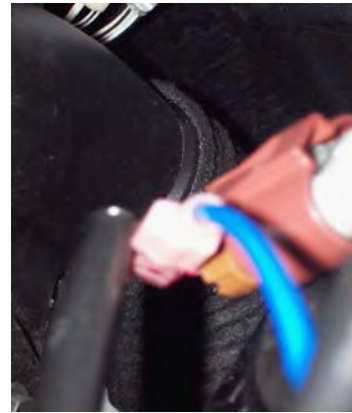
## Installation

1. Secure the 2 Relays to the wire loom next to the Battery with wire ties (see Picture 1)
2. Attach a T-Tap to the high beam red/black wire (see picture 3)



Picture 1

3. Attach a T-Tap to the low beam red wire (see picture 2)



Picture 2

4. Attached the switch relay's white wire to the high beam T-Tap with supplied spade connector.
5. Attach blue wire to low beam T-Tap with supplied spade connector (see picture 2)



Picture 3

6. Attach the 2 black wires from each relay to ground with larger replacement ring terminal. Connect the terminal to the 10mm bolt next to the relays (see picture 4)

Note: May be necessary to add larger ring terminal for ground connection.



Picture 4

7. Attach switch relay's red wire to one end of the fuse socket. Attach the other end of fuse socket to the 5 ft. primary red wire with butt connectors
8. Attach fog light relay's red wire to the positive terminal  $\oplus$  of the battery with a replacement ring terminal
9. Install split loom tube over wire from relays to fire wall secure with electrical tape. Locate the large vehicle harness grommet on the left side. Cut the auxiliary wiring access nipple off the grommet and push both wires through. Seal with 3M Silicone sealant (see picture 5)



Picture 5

10. Run the split loom tube with all wires on the driver side of the car. Use 8" wire ties as needed (see picture 5A)



Picture 5A

11. Remove the driver's sill plate, kick panel, left lower dash panel and lower dash panel below the steering wheel.
12. From inside the cabin locate the switch wires that were pushed through in step 10. It will be the grommet above the gas pedal (see picture 6)



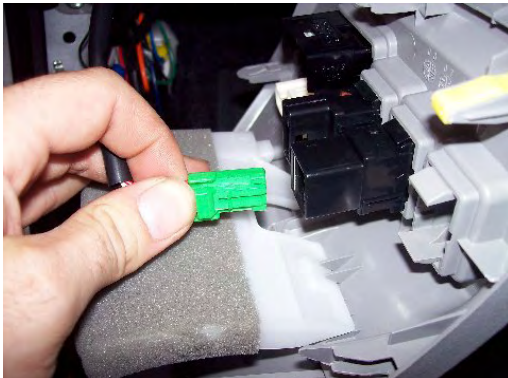
Picture 6

13. Mount switch into switch knockout on left side of dash (see picture 7)



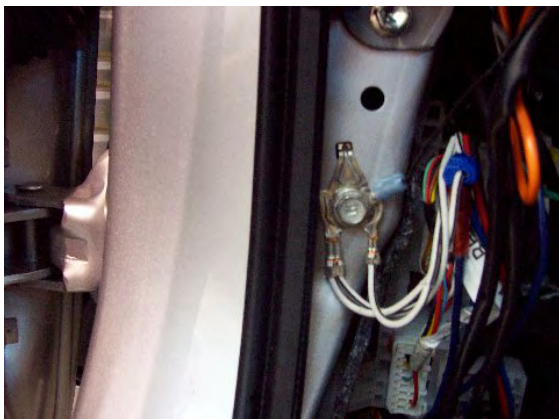
Picture 7

14. Install switch harness (see picture 8)



Picture 8

15. Secure ground (black) wire to bolt in kick panel (see picture 9)



Picture 9

16. Connect the white wire of switch harness to the white wire of fog light harness
17. Connect the red wire of switch harness to 5ft. red wire extension with butt connector. Secure with 4 supplied 4" wire ties.
18. Reinstall dash panels
19. Route the fog light wire under car.
20. Remove fog light cover plates and lower splash shields on both sides
21. Mount both fog lights into bumper with supplied Phillip screws (see picture 10)



Picture 10

22. Snap on both fog light bezels (see picture 11)



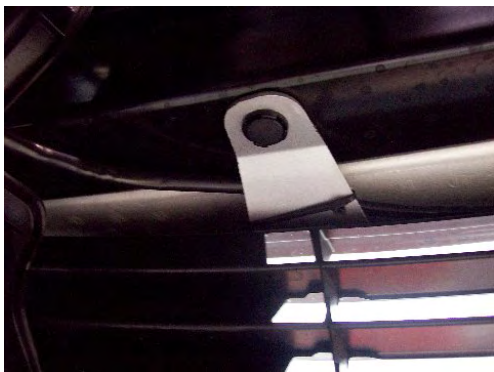
Picture 11

23. Plug in left side fog light into harness plug and secure with wire tie to OE harness (see picture 14)
24. Run right side of wire harness along the top of lower grill (see picture 12)

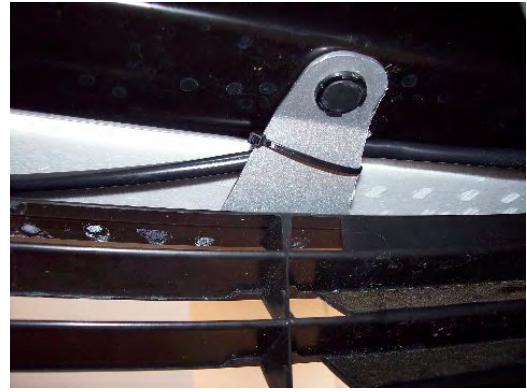


Picture 12

25. Run the wire behind lower grill “push pins” and plug into right fog light. Install four 8” wire ties along the upper part of lower grill (see picture 12, 13A and 13B) and wire tie to OE harness same as left side



Picture 13A



Picture 13B

26. Reattach the lower splash shields



Picture 14

**Check System for Operation**

1. Reconnect battery negative terminal torque to 36"lbs.
2. Turn on headlamp low beams, then press fog light switch to "ON" position. Fog lights should be working. Fog lights will only work when the low beam headlamps are "ON". Fog lights will NOT work when the high beam headlamps are "ON"

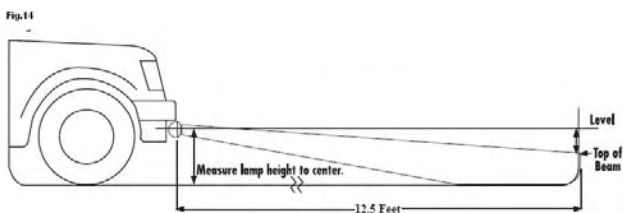
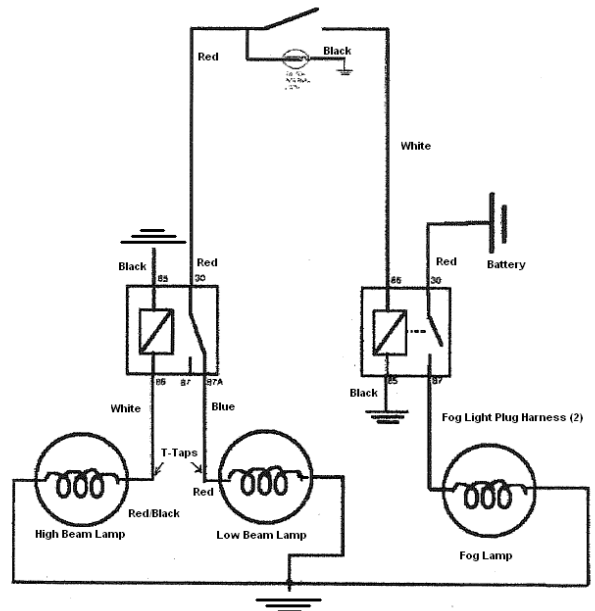
**Fog Light Aiming**

Traditional fog lights are usually mounted in the front bumper about 10-24 inches from the ground. There are two important issues to address when installing fog lights: the first is to minimize the amount of return glare into the drivers eyes, and the other is to minimize the glare into oncoming eyes. Both of these issues must be accomplished while putting as much light as possible on the road.

These fog weather light aiming instructions are suggestions taken from common practice and the S.A.E. standard J583. Some modifications to these instructions may be necessary to minimize glare.

Visual aim is made with the top of the beam 2 inches below the lamp center at 12.5 feet with the lamp facing straight forward (see picture 14)

Picture 14



**Checklist** – these points MUST be checked to ensure quality installation

**Check**

Accessory Functions Checks

---

- Fog Lights function .....
  
- All Panels snapped into place.....
  
- Fog Lights.....
  
- Battery Terminal.....

**Look For:**

---

- Fog lights engage with low beam and disengage with high beam.
  
- No loose panels and/or switches.
  
- Visually confirm lights are straight forward.
  
- Re-torque negative battery terminal to 36 in-lb

**VEHICLE FUNCTION CHECK**

AFTER ALL PANELS, COVERS AND COMPONENTS THAT WERE REMOVED HAVE BEEN REINSTALLED, TEST THOROUGHLY ALL MECHANICAL AND ELECTRICAL COMPONENTS DISCONNECTED AND/OR REMOVED FROM THE VEHICLE DURING THE INSTALLATION OF THIS ACCESSORY